



CHARTWAY INDUSTRIAL SERVICES

CORPORATE PRESENTATION



Exemplary Service to UK &
European Manufacturers
1992 - 2017

A LITTLE HISTORY

Chartway locate a source of supply in China and by the end of 2002 established a trading partnership called Chartway (Asia) Ltd, producing hot forged and machined components for the UK and European market.

Chartway Ownership changes. John & Karen Clark buy the company from Richard Carter

1992

2002

2008

2012

2019

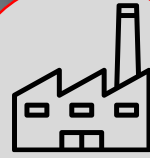
Chartway was founded in 1992 by Richard Carter. The business philosophy established by Richard was to provide a range of High Quality Precision Engineering Services combined with First Class Customer Care, and has remained at the forefront of everything we have adhered to over the last 28 years.

Moved to larger premises in order to ensure Chartway could continue it's growth in line with its Key Customers

Re-structure of the Management Team in order to focus on new growth area's whilst maintaining our high level of customer care to existing customers



WHAT WE DO



MANUFACTURE

We manufacture precision and safety critical parts in a wide range of materials



SUPPLY CHAIN MANAGEMENT

Our services include Kan Ban System Monitoring , Direct Line Feed, Scheduled and Consignment stock requirements



QUALITY – ISO9001:2015

Fully traceable certification on all parts, customer specific requests like ISIR, FMEA and PPAP available



OUR PROMISE

Our promise to you is that we will commit 100% of our resources to supporting the growth of your business by understanding your requirements and providing excellent service that is both relevant and responsive to your needs



STATISTICS



FACT

In 2018 we delivered over 15.2 Million piece parts across 747 different components to more than 75 clients in 8 different countries



FACT

Zero line stops for any of our clients since trading started in 1992

OUR LOCATIONS

UK – Head Office - West Midlands

- CNC Milling & Turning
- Wire Erosion
- Laser Cutting
- Fabrication
- Hot Forging

Chartway (Asia)

- CNC Milling & Turning
- Casting
- Hot & Cold Forging
- Fabrication
- Gauge Manufacture
- Ability to machine exotic alloys
- 3d Printing & Rapid Prototyping



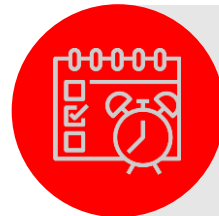
CASE STUDY – SCHEDULED ACCOUNT

EUROPEAN MULTI-SITE OEM



- High Volume parts across multiple lines
- Manufactured by Chartway Asia and UK
- Yearly volumes based on forecasted consumptions
- Contracted pricing
- ISIR on all new parts

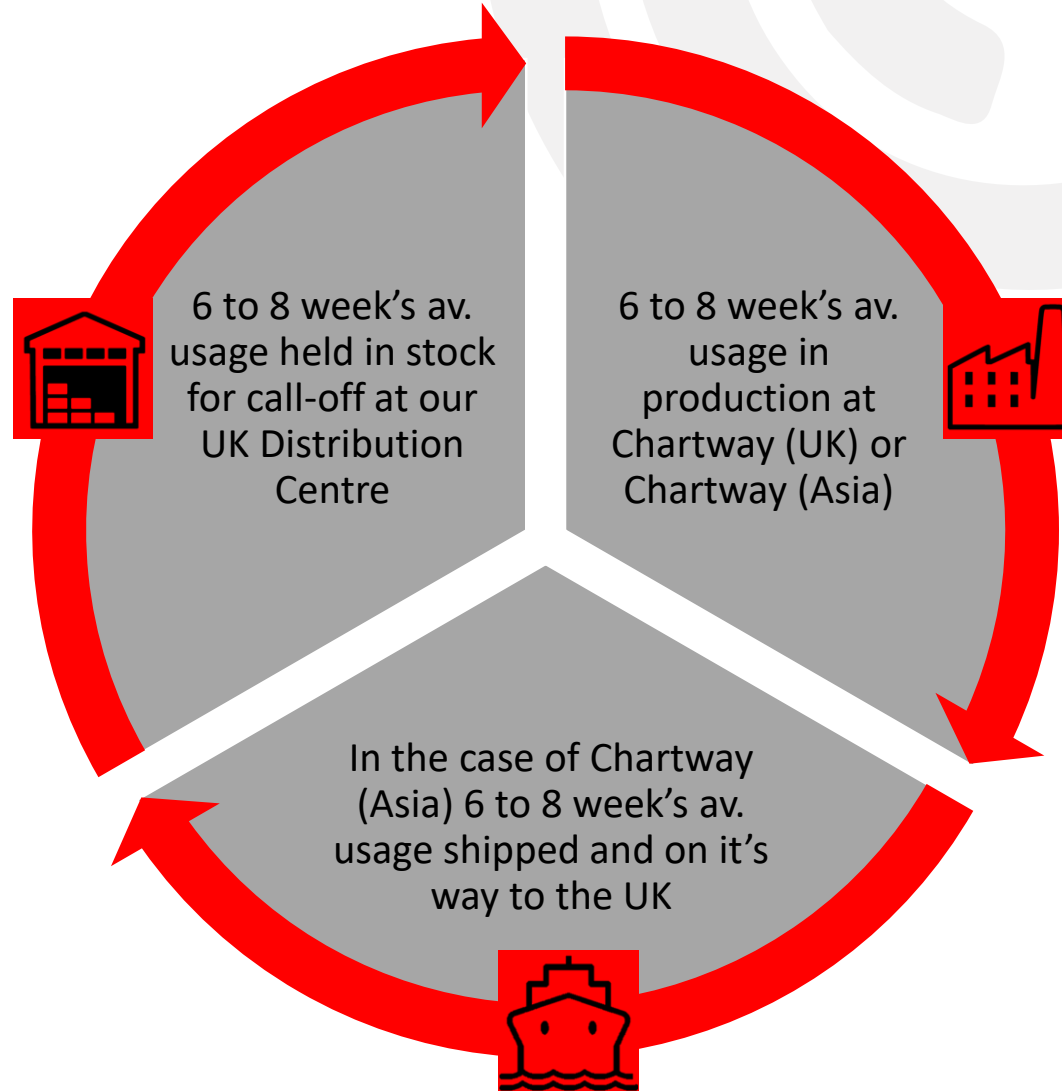
- Parts are manufactured in the UK, or in China at Chartway (Asia)
- Stock held at Chartway Asia and Chartway UK
- Monthly forecasts are given by the customer
- Chartway anticipates the usage and increases or decreases stock holding and buffer stocks accordingly
- Firm orders are placed and scheduled for delivery
- All paperwork and labels are unique to the customer



STOCKHOLDING AND CALL OFF

THREE STAGE PERPETUAL INVENTORY FLOW

The management and financing of this 3 stage process is crucial, requiring constant review of our client's firm and forecast demands.



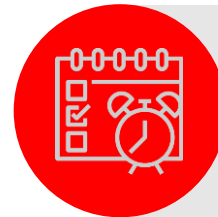
CASE STUDY – KANBAN SUPPLY MONITORING

100 BINS PER WEEK



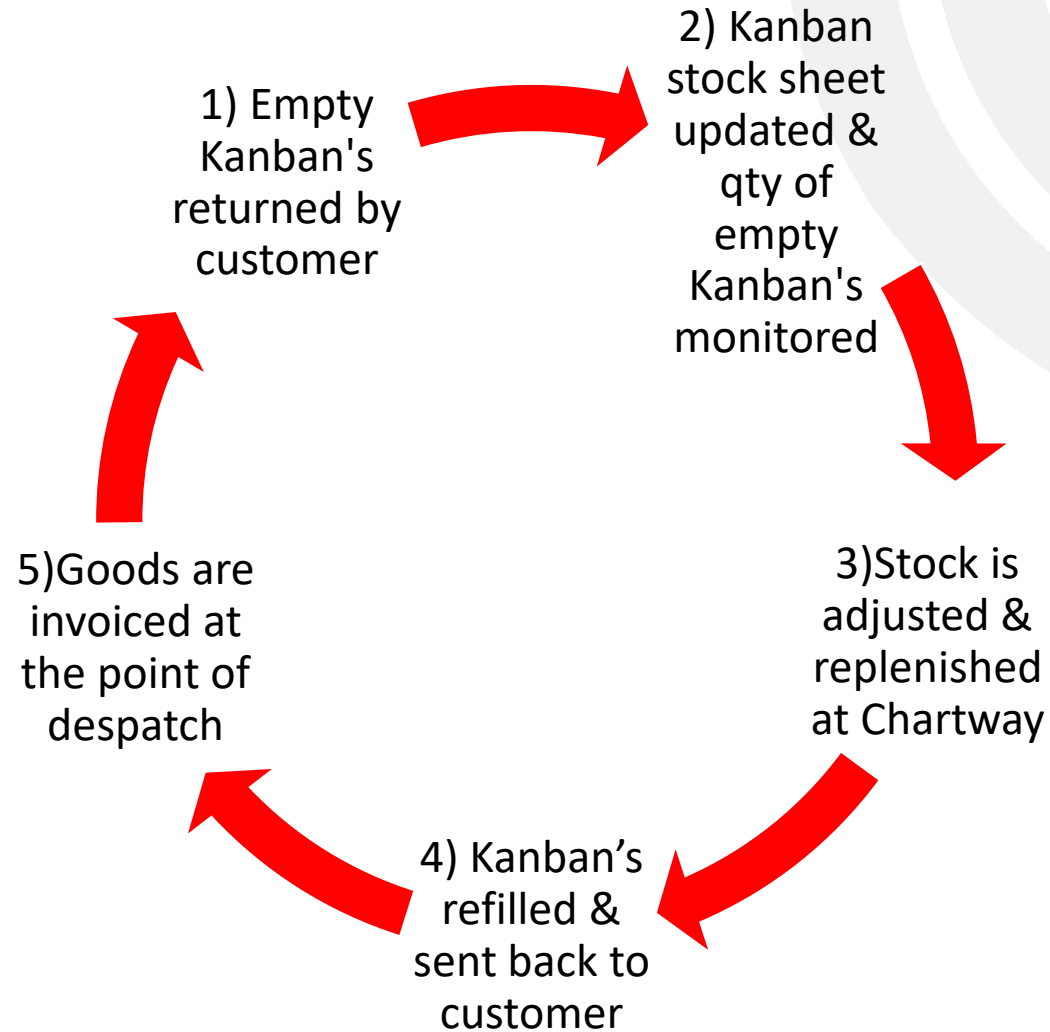
- Mixture of single operation parts and assembled, multi operation parts
- Parts are held at Chartway at both finished and sub levels
- Chartway manages inventory closely to match Kanban demand

- Each Kanban part has a number of bins in circulation
- Chartway monitors the number of Kan Bans returned, rate of return and adjusts supply accordingly
- Service calls with customer ensures both parties are aligned and spot trends to avoid over or under stocking



WEEKLY/DAILY/MONTHLY

KANBAN PROCESS



CHARTWAY (ASIA) FORGING

- 32 Sets of Hot Forging Machines ranging from 25 tonnes to 400 tonnes,
- Forged blanks up to a maximum of 10 kilos.
- Use of CAD systems to reduce the material & machining cost. Resulting in high integrity components at a very competitive price.
- The cost of the die is not charged until samples have been supplied and complete customer satisfaction has been achieved.
- The finished forged part has the “flash” removed and is then precision machined to drawing
- Our machine shop is equipped with a total of 120 Semi-Automatic Lathes, all operated by our highly skilled workforce of precision engineers.
- These high precision machines are capable of handling components from 3mm to 100mm in diameter.
- In addition to our Lathes we have a range of 14 CNC Milling & Turning Machines



CHARTWAY (ASIA) CASTINGS

- **Sand Casting, Gravity Casting, Low Pressure Die Casting and High Pressure Die Casting**
- Cast design and manufacturing
- Core Making
- The cost of the die is not charged until samples have been supplied and complete customer satisfaction has been achieved
- Aluminium Melting & Casting
- Aluminium Sand Casting range from 5 Kilogram up to 500 Kilogram
- Aluminium Low Pressure Die Casting range 1 Kilogram up to 800 Kilogram
- Heat treatment
- Milling and Turning
- Grinding & Polishing
- Drilling & Tapping

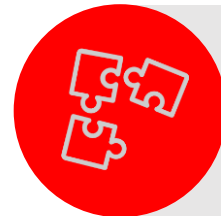
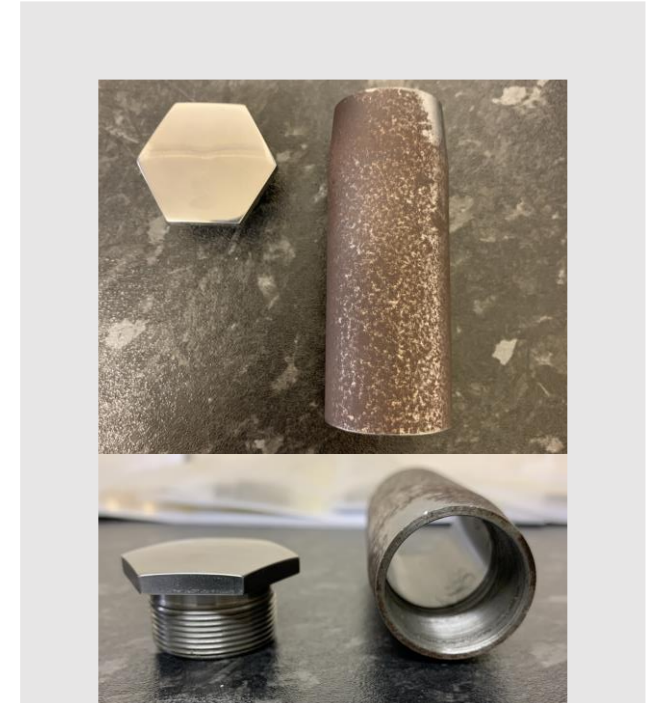


CASE STUDY – REVERSE ENGINEERING

MANUFACTURED FROM SAMPLE



- Received a mating part and single sample that only resembled the finished product visually rather than dimensionally
- Chartway scanned and measured the parts and produced a full manufacturing drawing and highlighted the care points around the critical dimensions
- Chartway produced a fully dimensioned manufacturing drawing



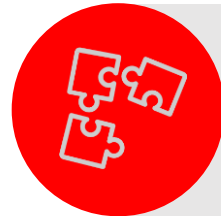
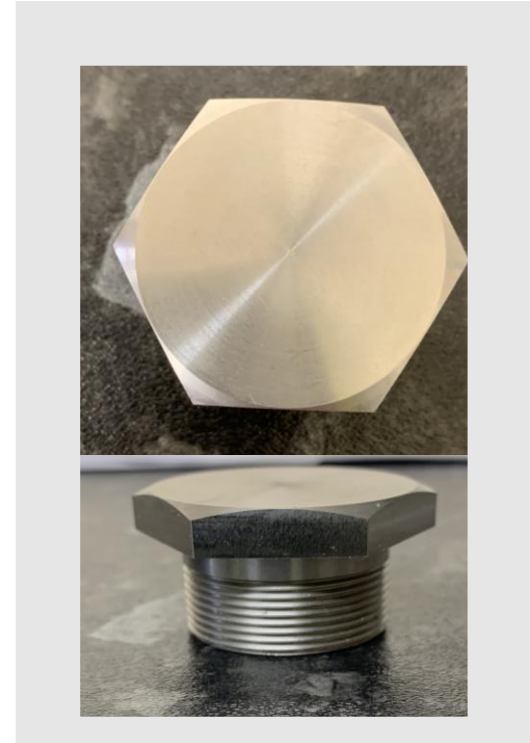
EXAMPLE PART AND MATING PART

CASE STUDY – REVERSE ENGINEERING

FIT FOR FUNCTION



- Chartway created 5 samples along with full ISIR documentation
- Sample was tested for functionality against the drawing and the mating part
- Once approved by Quality Control the sample was sent to the customer for sign off
- Sign off was attained and the production run then given the green light.



FINISHED PART WITH ADDITIONAL FEATURES

SENIOR MANAGEMENT TEAM



JOHN CLARK

Managing Director

John.clark@Chartway.co.uk

01384 880605



KAREN CLARK

Sales Director

karen.clark@Chartway.co.uk

01384 880602



CHRIS JONES

Business Operations Manager

chris.jones@chartway.co.uk

07562 160069



EMMA JONES

Sales Manager

emma.jones@Chartway.co.uk

07833 449550

OUR KEY PEOPLE

Stephen Hunter: Quality Engineer | Email: quality@chartway.co.uk |
Direct Dial: 01384 880607

Daniel Hadley: Assistant Quality Engineer |
Email: daniel@chartway.co.uk | Direct Dial: 01384 880607

Karen Gibbon: Customer Service Co-ordinator |
Email: k.gibbon@chartway.co.uk | Direct Dial: 01384 880620

Suzannah McVey: Customer Service Co-ordinator |
Email: Suzannah@chartway.co.uk | Direct Dial: 01384 888604

Rash Athwal: Works Team Leader | Email: rash@chartway.co.uk |
Direct Dial: 01384 884181





THANK YOU



SALES@CHARTWAY.CO.UK



[HTTP://WWW.CHARTWAY.CO.UK](http://WWW.CHARTWAY.CO.UK)